



Department of Clinical Laboratory Sciences

Room G014 Eaton

Dear Potential Student:

Thank you for downloading information about the Clinical Laboratory Science Program at The University of Kansas Medical Center. Students must take two (2) years of pre-requisite courses before entering our program. Courses do not have to be taken at the University of Kansas. The admission requirements for the program are outlined in the accompanying materials. Students receive a Bachelor of Science degree in Clinical Laboratory Science from the University of Kansas upon successful completion of the program. Graduates of our program have an average passing rate of 93% on the ASCP Board of Registry Certification Exam.

Applications received by January 15th of each year are reviewed first. Only applicants who meet minimum requirements for admission to the program will be interviewed. Interviews are scheduled for a Friday and Saturday in early March. The department assigns an interview date after receiving the required application materials. We will contact applicants via telephone to schedule an interview.

The department has four (4) scholarship funds for students during the second year of the professional program. One fund is exclusive for Kansas high school graduates only. This scholarship will cover **approximately one-third (1/3) to one-half (1/2)** of in-state tuition. Applications for these scholarships are given to students during Fall of the second year. For information regarding residency requirements go to: www.kumc.edu/studentcenter/regresfee.html .

You are welcomed to visit and tour the Clinical Laboratory Sciences Department. Please contact the appropriate CLS advisor prior to your visit to schedule an appointment time.

Summer and Fall Semester (June Through December)	Spring Semester (January through May)
Dr. Jan Hudzicki (913) 588-0153 or jhudzicki@kumc.edu	Dr. Patricia Hargrave (913) 588-0151 phargrav@kumc.edu

We look forward to hearing from you soon.

Sincerely,

Venus J. Ward, Ph.D., MT (ASCP), CLS (NCA)
Chair and Program Director

VJW/aaw
Enclosures

State of the Program

Clinical Laboratory Sciences Program

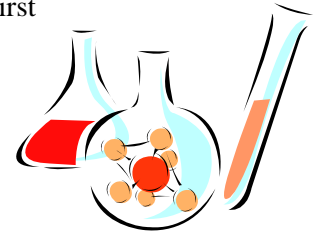
The University of Kansas Medical Center

June 2009



Where We've Been

- Program originated in early 1930s and was a program in the Pathology Department until 1984. At that time, it was moved to the School of Allied Health as the Department of Medical Technology.
- Department name changed to "Clinical Laboratory Sciences" in 1999. Historically, KU Hospital was the only clinical site for the program. In 1995, other sites were added. During the 2006-2007 Academic Year additional clinical sites were brought on board and now the program is affiliated with twenty-five external sites.
- Instituted a 2nd concentration for B.S. in CLS degree (molecular biotechnology), December 2001.
- Beginning the Fall of 2005 the program transitioned from a 3+1 program to a 2+2 program allowing the program to increase the number of enrolled students and more closely follow the traditional academic calendar.
- Instituted a new graduate degree, Masters in Molecular Biotechnology, admitting the first students in Fall, 2006
- Implemented categorical certifications in Microbiology, Hematology, and Clinical Chemistry in the Fall of 2008 to respond to the needs of area laboratories.



Where We Are Currently

➤ Students

- Graduated 23 students, May 2009 (16 clinical; 5 molecular biotechnology – five students completed both academic tracks) and 18 students, May 2008. Every student who sought employment (in the field) secured jobs.
- 22 students will be entering the senior year of the program in August 2009
- At least twenty-six new students will enter the program August 2009
- We are affiliated with the University of Wolverhampton, England, for clinical rotation exchange, providing students with an overseas educational experience.
- Graduate two Master's in Molecular Biotechnology students in May 2009.
- Five students returning for the second year of the graduate program in Molecular Biotechnology in August 2009 with 4 new students entering the graduate program August 2009.

➤ Molecular Biotechnology Concentration

- All students (clinical & molecular biotechnology) are required to take the same clinical lecture & student lab courses the first 3 semesters of the program.
- This is the **ONLY** molecular biotechnology program in the region that provides intensive experience (14 weeks) in active clinical and research labs as part of the curriculum. Our undergraduate program in Molecular Biotechnology was one of the first two programs in the country to receive this specific accreditation.
- Practicum sites for the program include: research labs at KUMC & KU Lawrence; Stowers Institute for Medical Research; Clinical Reference Laboratories; ViraCor Laboratories; Children's Mercy Hospital & Clinics; Quest Diagnostics; Biomune; KCPD Crime Lab; IBT Reference Laboratories.
- Graduates are eligible to take the NCA Certified Laboratory Specialist in Molecular Biology exam [CLSp(MB)] and the ASCP Technologist in Molecular Pathology (MP) examination.



➤ Faculty

- We welcomed a new blood bank lab instructor, to teach in the undergraduate program.

Where We're Going

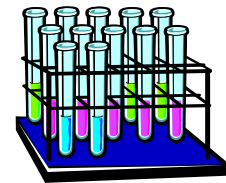
- Develop a proposal for a Post-graduate Certificate for the Molecular Biotechnology concentration.
- Develop a proposal for a Masters in Clinical Laboratory Science that also leads to certification.
- Continue to develop and host wet workshops for Continuing Education Credit for Clinical Laboratory Personnel.

Clinical Laboratory Sciences Fund



Funding Needs That Will Advance the Program

- Scholarships for non-Kansas high school graduates
 - Alan Voos Memorial Scholarship Fund is the newest fund. Contributions are still needed to be able to help multiple students.
 - Every year qualified applicants are “lost” to other programs due to the cost of non-resident tuition or they did not graduate from a Kansas high school. The Alan Voos Memorial Scholarship Fund will help these students.
- Endowed Professorship
 - Will have teaching and research responsibilities in the Master’s Program.
- Specialized equipment to support the Masters Program.
- Resources for faculty development.



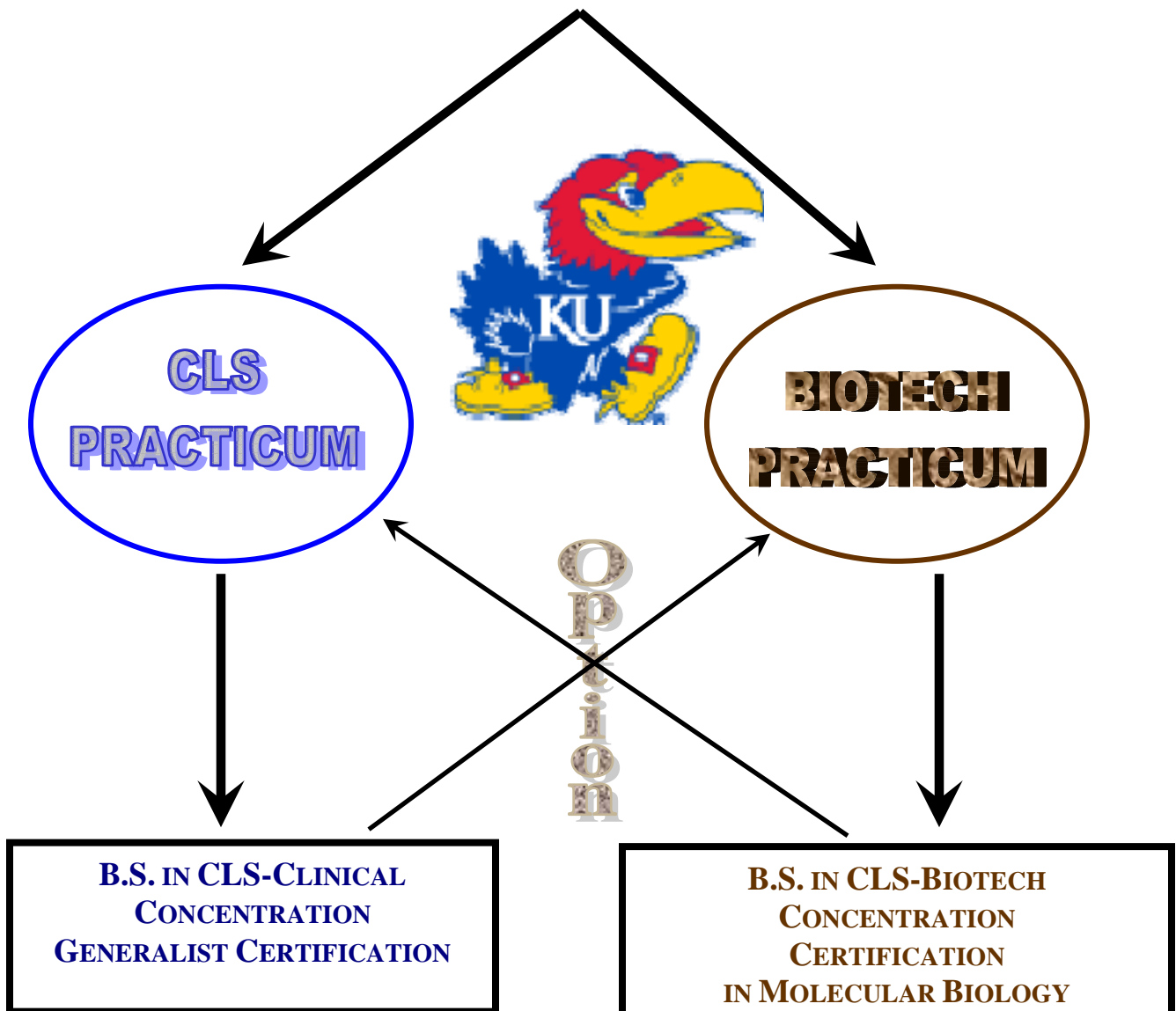
Summary

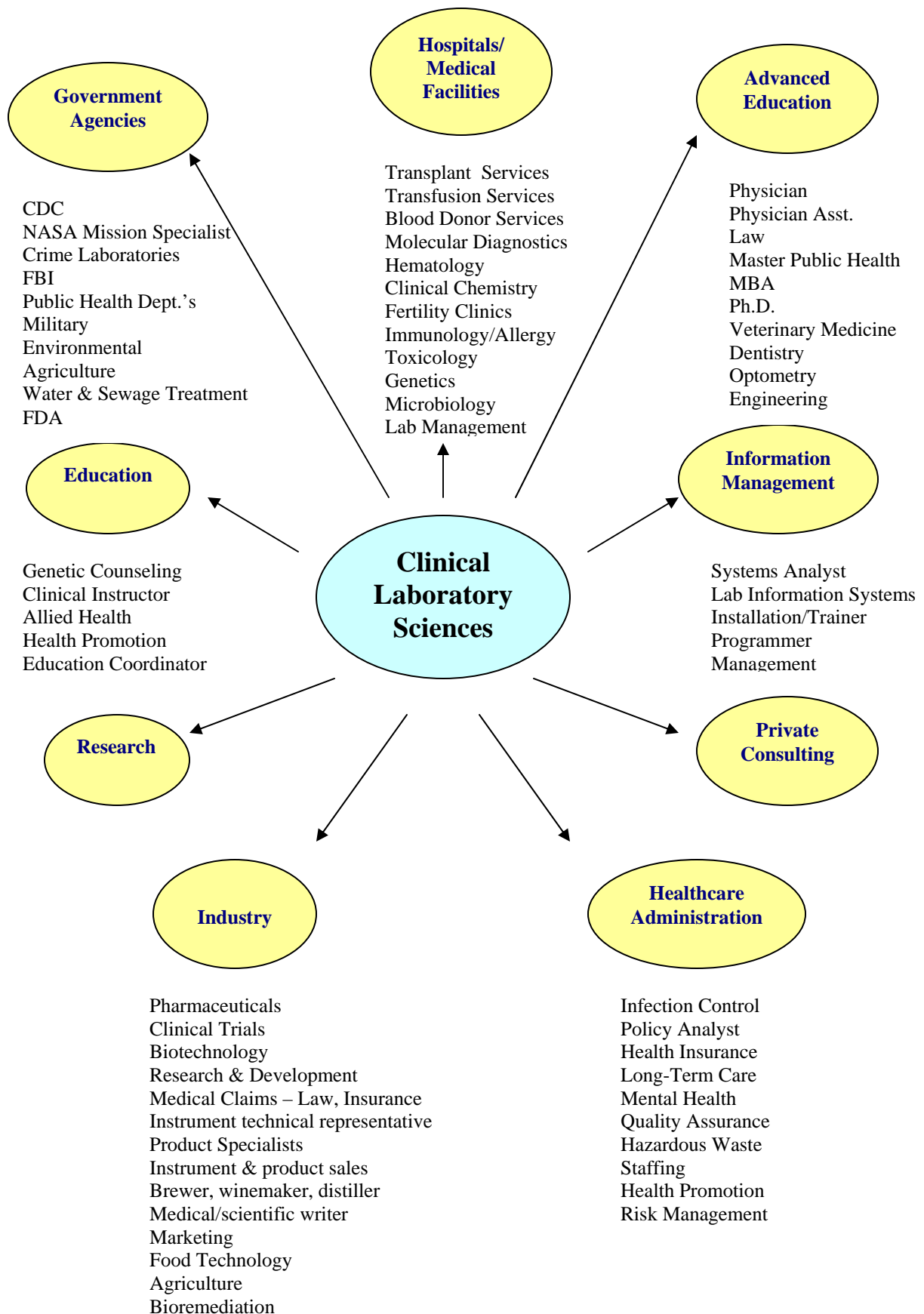
- The CLS Department is strong and its program offerings are growing steadily.
- We enjoy a very supportive Dean, Dr. Karen Miller.
- The addition of new programs in the department is in line with the University’s Life Sciences Research Strategic Plan and the Life Sciences Initiative within the Greater Kansas City Area.
 - Programs will provide skilled staff and technicians to operate and maintain sophisticated, high-technology equipment used in life sciences research.
- We are initiating steps to generate revenue for the department by working with KU Health Partners.
- To take the Department to the next level of accomplishment, we will need continued state assistance, revenue from KU Health Partners endeavors and increased private support.

Kansas University Medical Center
School of Allied Health
Clinical Laboratory Sciences (CLS) Program

Current Curriculum Configuration

CLS/Biotechnology Core Courses
First 3 Semesters





MOLECULAR BIOTECHNOLOGY CONCENTRATION
CLINICAL LABORATORY SCIENCE PROGRAM
SCHOOL OF ALLIED HEALTH
UNIVERSITY OF KANSAS MEDICAL CENTER

The Molecular Biotechnology Concentration of the Clinical Laboratory Sciences Program will prepare students for the dynamic world of molecular biology. Our graduates will have gained:

- ◆ Knowledge and experience in state-of-the-art molecular techniques, such as:
 - Nucleic Acids
 - ◆ Recombinant DNA techniques (gene cloning)
 - ◆ Nucleic acid (DNA and RNA) isolation and purification
 - ◆ Nucleic acid amplification (Polymerase Chain Reaction-PCR, real-time quantitative PCR)
 - ◆ DNA sequencing
 - ◆ Electrophoretic separation and analysis of nucleic acids
 - ◆ Southern hybridization
 - ◆ Oligonucleotide synthesis
 - ◆ Molecular diagnostic detection of:
 - ◆ *Infectious disease*
 - ◆ *Acquired genetic diseases and conditions*
 - ◆ *Hereditary genetic diseases and conditions*
 - ◆ *Genetic identity markers*
 - Proteins
 - ◆ Construction of hybrid protein molecules
 - ◆ Electrophoretic separation and analysis of proteins
 - ◆ Protein/peptide purification and characterization
 - ◆ Affinity purification
 - ◆ Immunoprecipitation
 - ◆ Standard methodologies, such as ion-exchange and gel filtration
 - ◆ Western blotting
 - ◆ Amino acid analysis
 - ◆ Peptide sequencing
 - ◆ Peptide synthesis
 - Cell culture
 - ◆ Preparation and handling of cell culture media
 - ◆ Culture of cells from tissue samples
 - ◆ Propagation of cell lines
 - ◆ Resuscitation and storage of cell cultures
 - ◆ Vital staining of cells
- ◆ Extensive hands-on experience with molecular diagnostic protocols and instrumentation, such as:
 - ◆ DNA capillary sequencing instruments
 - ◆ Various standard and real-time PCR instruments
 - ◆ Microarray
 - ◆ Nucleic acid extraction and quantification instruments
 - ◆ Sequencing, hybridization, and amplification-based diagnostic technologies
- ◆ Experience in the handling of processing of clinical samples for molecular techniques
- ◆ Unique qualifications for entry into molecularly-oriented positions in clinical laboratory settings in: *Hospitals, Physicians offices, Government laboratories, Industrial settings*
- ◆ Unique qualifications for entry into molecularly-oriented positions in research laboratory settings in: *Academic laboratories, Government laboratories, Industrial laboratories*
- ◆ Qualifications to sit for national certification examinations: *Certified Laboratory Specialist in Molecular Biology CLSp(MB)(NCA) and Molecular Pathology Technologist MP(ASCP)*

CLINICAL LABORATORY SCIENCES
The University of Kansas Medical Center
School of Allied Health
Bachelor of Science Degree Requirements



(Clinical Concentration)

Students are required to complete a minimum of 57 pre-requisite Credit Hours. The following **suggested study plan** may be helpful in planning course work. Courses with similar content may be acceptable alternatives.

Freshman-Sophomore Preparation

First Semester (14-15 Credit Hours)	Second Semester (15 Credit Hours)
ENGL 101 Composition (3) CHEM 184 Foundations of Chemistry (5) MATH 101 Algebra or MATH 115 Calculus (3) Social Science Elective (3) CLS 210 Intro to Clinical Laboratory Science (1) [elective] <i>(Can be taken once during any of the first 4 semesters)</i>	ENGL 102 Composition and Literature (3) BIOL 150 Principles of Molecular and Cellular Biology (4) CHEM 188 Foundations of Chemistry II (5) Social Science/World Culture Elective (3)
Third Semester (16 Credit Hours)	Fourth Semester (12-13 Credit Hours)
CHEM 625 Organic I Lab and 622 Fund's of Organic OR 624 Organic I (5) BIOL 400/402 Fundamentals of Microbiology & Laboratory (5) BIOL 570 Intro to Biostatistics OR MATH 365 Elementary Statistics OR SOC 310 Intro to Social Research OR PSYC 300 (3) Statistics for Psychological Research Humanities Elective (3)	BIOL 350 Intro to Genetics (3) COMS 130 OR 131 Speaker-Audience Communication OR PHIL 148 Reason & Argument (3) OR PHIL 310 Intro to Symbolic Logic (3) BIOL 246 Principles of Human Physiology OR BIOL 408 Physiology of Organisms (3) OR BIOL 646 Mammalian Physiology (4) Humanities Elective (3)

Clinical Concentration Professional Program

Fifth Semester (16 Credit Hours)	Sixth Semester (16 Credit Hours)
BIOL 600 Introductory Biochemistry (4) CLS 523 Fund. of Anal. Techniques Lab/Lec (4) CLS 536 Hematology I (3) CLS 537 Hematology I Laboratory (2) BIOL 503 Immunology (3)	CLS 532 Clinical Microbiology I (3) CLS 533 Clinical Microbiology I Laboratory (3) CLS 546 Hematology II (3) CLS 547 Hematology II Laboratory (2) CLS 530 Clinical Chemistry I (3) CLS 549 Clinical Immunology I Laboratory (2)

Summer Session (1-2 Credit Hour)

CLS 520 Phlebotomy (1)
 CLS 690: Special Topics: Enrichment Experience [Elective] (1)

Seventh Semester (17 Credit Hours)	Eighth Semester (20 Credit Hours)
CLS 540 Clinical Chemistry II (2) CLS 541 Senior Seminar in CLS (2) CLS 542 Clinical Microbiology II (2) CLS 543 Clinical Microbiology II Laboratory (2) CLS 544 Immunohematology I (3) CLS 545 Immunohematology I Laboratory (2) CLS 605 Introduction to Molecular Biotechnology (1) CLS 661 Management Principles in Health Care (3)	CLS 640: Clinical Chemistry III (2) CLS 641: Clinical Chemistry Practicum (3) CLS 642: Clinical Microbiology III (2) CLS 643: Clinical Microbiology Practicum (3) CLS 644: Immunohematology II (1) CLS 645: Immunohematology Practicum (1) CLS 646: Hematology III (2) CLS 647: Hematology Practicum (3) CLS 648: Clinical Immunology II (1) CLS 649: Clinical Immunology Practicum (1) CLS 650: CLS Review (1)

CLINICAL LABORATORY SCIENCES
The University of Kansas Medical Center
School of Allied Health
Bachelor of Science Degree Requirements



(Molecular Biotechnology Concentration)

Students are required to complete a minimum of 57 pre-requisite Credit Hours. The following **suggested study plan** may be helpful in planning course work. Courses with similar content may be acceptable alternatives.

Freshman-Sophomore Preparation

First Semester (14-15 Credit Hours)	Second Semester (15 Credit Hours)
ENGL 101 Composition (3) CHEM 184 Foundations of Chemistry (5) MATH 101 Algebra or MATH 115 Calculus (3) Social Science Elective (3) CLS 210 Intro to Clinical Laboratory Science (1) [elective] <i>(Can be taken once during any of the first 4 semesters)</i>	ENGL 102 Composition and Literature (3) BIOL 150 Principles of Molecular and Cellular Biology (4) CHEM 188 Foundations of Chemistry II (5) Social Science/World Culture Elective (3)
Third Semester (16 Credit Hours)	Fourth Semester (12-13 Credit Hours)
CHEM 625 Organic I Lab and 622 Fund's of Organic OR 624 Organic I (5) BIOL 570 Intro to Biostatistics OR MATH 365 Elementary Statistics OR SOC 310 Intro to Social Research OR PSYC 300 (3) Statistics for Psychological Research BIOL 400/402 Fundamentals of Microbiology & Laboratory (5) Humanities Elective (3)	BIOL 350 Intro to Genetics (3) COMS 130 OR 131 Speaker-Audience Communication OR PHIL 148 Reason & Argument (3) OR PHIL 310 Intro to Symbolic Logic (3) BIOL 246 Principles of Human Physiology OR BIOL 408 Physiology of Organisms (3) OR BIOL 646 Mammalian Physiology (4) Humanities Elective (3)

Molecular Biotech Concentration Professional Program

Fifth Semester (17 Credit Hours)	Sixth Semester (14 Credit Hours)
BIOL 600 Introductory Biochemistry (4) CLS 523 Fund. of Anal. Techniques Lec/Lab (4) CLS 536 Hematology I (3) CLS 537 Hematology I Laboratory (2) BIOL 503 Immunology (3)	CLS 532 Clinical Microbiology I (3) CLS 533 Clinical Microbiology I Laboratory (3) CLS 546 Hematology II (3) CLS 547 Hematology II Laboratory (2) CLS 530 Clinical Chemistry I (3) CLS 549 Clinical Immunology I Laboratory (2)

Summer Session (1-2 Credit Hour)

CLS 520 Phlebotomy (1)
 CLS 690 Special Topics: Rural Enrichment [Elective] (1)

Seventh Semester (17 Credit Hours)	Eighth Semester (22 Credit Hours)
CLS 540 Clinical Chemistry II (2) CLS 541 Senior Seminar in CLS (2) CLS 542 Clinical Microbiology II (2) CLS 543 Clinical Microbiology II Laboratory (2) CLS 544 Immunohematology I (3) CLS 545 Immunohematology I Laboratory (2) CLS 605 Introduction to Molecular Biotechnology (1) CLS 661 Management Principles in Health Care (3)	CLS 610: Adv. Biotechniques (3) CLS 611: Adv. Biotechniques Lab (2) CLS 615: Journal Club (1) CLS 620: Radiation Safety (1) CLS 621: Biotechnology Methodologies Practicum (4) CLS 622: Problems in Molecular Genetics, Proteomics & Molecular Immunology (2) One Elective Practicum combination (4 hrs) to be selected from: Cytogenetics, Protein Structure/Function, Cytokine/Chemokine Biology, Molecular Immunology CLS 623: Molecular Genetics Practicum (4) CLS 655: Molecular Biotechnology Review (1)

Clinical Laboratory Sciences

FREQUENTLY ASKED QUESTIONS



1. **What if I already have a B.S. degree?**

All students who are accepted into the CLS program at the University of Kansas Medical Center must satisfy our degree requirements for a B.S. in CLS. Students who already have a degree will receive a second degree.

2. **Requirements and Process for Admission/Application to the Program**

Download the application packet from our website (www.cls.kumc.edu). It has the forms that need to be completed and returned to this office. The website also lists prerequisite courses that need to be completed prior to entering the professional program.

3. **Costs of Program**

The tuition is subject to change every year pending legislative action. The current tuition and fees for the program are published in the Timetable of Classes for the University of Kansas (www.timetable.ku.edu/). Students enroll for approximately 69 credit hours during the 2 years at the KUMC campus. There are additional campus privilege fees and laboratory fees that students also pay.

4. **Living Arrangement Possibilities for Students**

The KUMC campus **does not** have dorms. Students typically find housing in apartments in the metro area.

5. **How to Apply for Financial Aid**

All student loans must be obtained through KUMC and not your current school. (This includes students currently attending the KU-Lawrence campus). If you need loans, please go to www.kumc.edu/studentcenter/finaidprocess.html to access the forms to submit.

6. **Program Starting & Ending Dates**

The professional program has one intake of students per year in the fall semester (August) of each academic year. Students completing one concentration (clinical or molecular) will graduate in May of the second year. Students competing both concentrations will graduate in December of the second year.

7. **Application Deadlines**

Applications received by January 15th are reviewed first. Applications will continue to be accepted until the class is filled.

8. **Can I do a phone interview for out of state applications?**

The Admissions Committee would consider that request.

9. **Part-time Employment Possibilities**

Students should consider carefully their academic load before accepting part-time employment, as the last two years are science-intensive. Students in the program are often able to find employment in local hospital and reference laboratories.

10. **Health Insurance Opportunities**

All students are required to have health insurance. The Student Admissions Office on this campus has information about acceptable insurance policies for students. You can contact them to determine the cost.

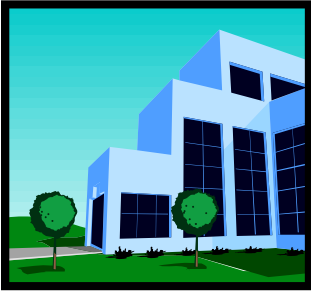
11. **Official Uniform Requirements**

Currently the students are required to wear plain-colored scrubs (without printed figures).

Dr. Jan Hudzicki is Chair of the Admissions Committee for the department. She may be contacted via email: jhudzicki@kumc.edu with other questions you may have about the curriculum structure, etc.

All correspondence should be addressed to:

Department of Clinical Laboratory Sciences
The University of Kansas Medical Center
3901 Rainbow Boulevard, Mail Stop 4048
Kansas City, KS 66160
Telephone: 913-588-5220 TDD: 913-588-7963



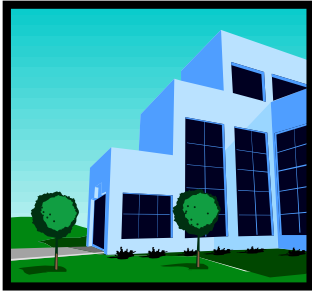
Clinical Laboratory Sciences
The University of Kansas Medical Center
School of Allied Health



Clinical Sites

Clinical Concentration	
➤ University of Kansas Hospital <i>Kansas City, KS</i>	➤ Children's Mercy Hospital <i>Kansas City, Missouri</i>
➤ Clinical Reference Lab <i>Lenexa, Kansas</i>	➤ Quest Diagnostics <i>Lenexa, Kansas</i>
➤ Mt. Carmel Medical Center <i>Pittsburg, Kansas</i>	➤ Western Missouri Medical Center <i>Warrensburg, Missouri</i>
➤ Truman Medical Center <i>Kansas City, Missouri</i>	➤ Boone Hospital Center <i>Columbia, MO</i>
➤ Bothwell Regional Health Center <i>Sedalia, MO</i>	➤ Heartland Regional Medical Center <i>St. Joseph, MO</i>
➤ IBT Reference Lab <i>Lenexa, KS</i>	➤ Liberty Hospital <i>Liberty, MO</i>
➤ St. Francis Hospital & Health Services <i>Maryville, MO</i>	➤ Nevada Regional Medical Center <i>Nevada, MO</i>
➤ Newman Regional Health Center <i>Emporia, KS</i>	➤ Olathe Medical Center, Inc <i>Olathe, KS</i>
➤ Physicians Reference Lab <i>Overland Park, KS</i>	➤ St. Francis Hospital & Medical Center <i>Topeka, KS</i>
➤ Stormont-Vail Health Care <i>Topeka, KS</i>	➤ Susan B. Allen Memorial Hospital <i>El Dorado, KS</i>
➤ VA Medical Center <i>Kansas City, MO</i>	Mercy Regional Medical Center <i>Manhattan, Kansas</i>

NOTE: Students need to be aware that they may be assigned to clinical rotation sites outside of the Kansas City Metropolitan area. In these cases, students are responsible for their own housing and meals during the clinical rotation semester.



Clinical Laboratory Sciences
The University of Kansas Medical Center
School of Allied Health



Clinical Sites

Molecular Biotechnology Concentration	
➤ University of Kansas Medical Center <i>Kansas City, KS</i>	➤ University of Kansas <i>Lawrence, KS</i>
➤ Children's Mercy Hospital <i>Kansas City, Missouri</i>	➤ IBT Reference Laboratories <i>Lenexa, KS</i>
➤ Stowers Institute for Medical Research <i>Kansas City, Missouri</i>	➤ Quest Diagnostics <i>Lenexa, Kansas</i>
➤ Clinical Reference Lab <i>Lenexa, Kansas</i>	➤ ViraCor Laboratories <i>Lee's Summit, Missouri</i>
➤ Kansas City Police Department Crime Lab <i>Kansas City, Missouri</i>	➤ Biomune <i>Lenexa, Kansas</i>

NOTE: Additional sites are currently being negotiated and will be added to the above list when they are approved.



The University of Kansas Medical Center

CLINICAL LABORATORY SCIENCES SCHOLARSHIPS

(Available to Students in their Second Year of the KUMC CLS Program)

Applications for scholarships 1, 2, 3, and 4 will be sent to you after you have been admitted to the Clinical Laboratory Science program. Scholarships 5 and 6 are department nominations to the Dean while the student is attending KUMC.

1. Bertha Martha Connor Scholarship Fund

Students must be accepted into the Clinical Laboratory Science program at KUMC. Scholarships are awarded on the basis of need or scholastic achievement. Amount of scholarship awards vary from \$400 to \$1,000.

2. June Hull-Sherrid Scholarship Fund #1

Student must be accepted into the Clinical Laboratory Science program at KUMC. Scholarships are awarded on the basis of need or scholastic achievement. Amount of scholarship awards varies from \$400 to \$1,800.

3. June Hull-Sherrid Scholarship Fund #2

Students must be accepted into the Clinical Laboratory Science program at KUMC. Students must have also graduated from a Kansas High School. Amount of scholarship awards usually begin at \$3,000.

4. Alan Voos Memorial Scholarship Fund

Students must be accepted into the Clinical Laboratory Science program at KUMC, be in good standing, and show financial need. Amount of scholarship awards vary from year to year.

5. Dean's Scholarship

Students must be accepted into one of the School of Allied Health programs at KUMC. Scholarships are awarded on the basis of Scholastic Achievement (minimum GPA of 3.5) following at least one semester of study at KUMC, participation in professional societies, service to the community and independent research.

6. Dean's Cultural Diversity Scholarships

Students must be accepted into one of the School of Allied Health programs at KUMC. Students that are ethnic minorities are eligible for these scholarships. Scholarships are awarded based on GPA following at least one semester of study at KUMC, participation in professional societies, service to the community and independent research.

Additional External Scholarships available for CLS students

(This is not an all inclusive list; students are encouraged to seek out additional monies on their own)

- **KUMC Medical Auxiliary Award**

This award is given in recognition of demonstrated excellence in scholastic achievement, leadership potential, and social consciousness, as evidenced by achievements while in the KU School of Allied Health. Only students participating in the spring Recognition Ceremony may apply. Information is email to all KUMC students regarding this award

- **ASAHP Scholarship for Excellence** (See Financial Aid website for additional information)

The Association of Schools of Allied Health Professions sponsors a scholarship program for allied health students enrolled in its member schools. The purpose of the scholarship program is to recognize outstanding students in the allied health professions who are achieving excellence in their academic programs and have significant potential to assume future leadership roles in the allied health professions.

- **Lawrence Memorial Hospital Scholarship**

- A KU School of Allied Health student with permanent residence in Douglas County, Kansas is eligible for recognition by Lawrence Memorial Hospital. Criteria for this scholarship include a strong academic record and leadership potential. Financial need may be considered. (This scholarship is awarded to the School of Allied Health and the School of Nursing on an alternating basis; students of the SoAH are eligible in the fall of odd-numbered years.)

- **CampusCareerCenter.com / ASAHP Scholarship Fund**

The [Association of Schools of Allied Health Professions](#) has a partnership with CampusCareerCenter.com in which a \$1500 scholarship is awarded every 60 days to a deserving student. [Visit CampusAlliedHealth.com](#) for details.

- **Emil von Behring Scholarship Program – Siemens Diagnostics**

- Value: \$2,500 each
- Number of scholarships: 34
- Who: students in approved Medical Technologist/Clinical Laboratory Scientist programs
- Partner: the American Society for Clinical Pathology administers this program on behalf of Siemens
- Student Eligibility:
 - Currently enrolled in an NAACLS accredited program AND be in the fourth year or final clinical year of education by the application close date
 - Minimum GPA of 2.8 out of 4.0
 - A United States citizen OR a permanent United States resident
 - A completed application packet, submitted to ASCP by November 1, 2008.

http://diagnostics.siemens.com/webapp/wcs/stores/servlet/CategoryDisplay~q_catalogId~e - 111~a_categoryId~e 1018915~a_catTree~e 100005,1018915~a_langId~e - 111~a_storeId~e 10001.htm

Deadline is in October.

- **Dade Behring Legacy Scholarships**

- The Siemens Healthcare Diagnostics Legacy Student Scholarship**

- Legacy Scholarships of \$5,000 each are available to five students who are the children, grandchildren, or siblings of clinical laboratory professionals who continue their family legacy by pursuing associate or bachelor's degrees in NAACLS accredited MLT/CLT or MT/CLS programs. Siemens Healthcare Diagnostics is working with the American Society for Clinical Pathology as its administering partner for this scholarship.

- <http://www.ascp.org/MainMenu/students/Laboratorystudents/Scholarships.aspx>

- Deadline is in October.

- **American Proficiency Institute**

- <http://www.api-pt.com/>

- \$2000 scholarship for juniors and seniors

- Deadline is in November

- **ASCP Scholarships**

- Offered to students enrolled in their final clinical year of study in Cytotechnologist (CT), Histotechnician (HT), Histotechnologist (HTL), Medical Laboratory Technician (MLT), Pathologists' Assistant (PA) or Medical Technologist (MT) programs. To be eligible for these scholarships, applicants must be enrolled in a NAACLS or CAAHEP accredited laboratory science program, be either a United States citizen or a permanent resident, and maintain a minimum GPA of 2.8 GPA on a 4.0 scale. Offers 25 \$1000 scholarships for CLS students.

- <http://www.ascp.org/MainMenu/students/Laboratorystudents/Scholarships.aspx>

- Deadline is in October

- **Lab Are Vital Facebook Scholarship Contest**

- \$2500 scholarship for a video, T-shirt design or advertisement

- <http://blog.wired.com/wiredscience/2008/01/contest-creativ.html>

- Deadline is in March

- **KSCLS Scholarships**

- \$500 scholarship awarded to student attending Kansas CLS programs. See Jennifer Jones for additional information

- Deadline is usually in March

- **Heart of America Blood Banks**

A \$500 scholarship is available for current MT/CLS or MLT/CLT students who submit the best paper on a Transfusion Medicine Topic. Additional information will be supplied during your Immunohematology course in the Fall of the second year. Deadline for submission is April 1. You also must present the paper at their annual meeting in May if selected for the scholarship.

- <http://www.haabb.org>

- **International Order of the King's Daughters and Sons Scholarships**

Health Careers Department

For further information contact:

Director

Health Careers Scholarship Department

P. O. Box 1040

Chautauqua, NY 14722-1040

The number of scholarships available may vary from year to year.

Students preparing for careers in medicine, dentistry, nursing, pharmacy, physical or occupational therapy, and medical technologies are eligible to apply. A student must be a U.S. or Canadian citizen, enrolled full time in a school accredited in the field involved and application must be for at least the third year of college. There is no age limit. Scholarships are for \$1000.00.

Requests for applications must include a stamped, self-addressed legal size envelope. Deadline for applications: must be postmarked no later than April 1st.

- **Stepping Stone Scholarship – Heartland Health, St. Joseph, MO**

<http://www.heartland-health.com/body.cfm?id=1398>

Heartland Health's Stepping Stones is an academic workforce development program designed to provide support to individuals who have been accepted into one of several in-demand health-care careers (see inset for current listing).

Stepping Stones participants agree to a work commitment at Heartland following their graduation. The work commitment is one year for each full or partial year of financial assistance they receive. Participants gain valuable experience working in a hospital with a reputation for excellence while Heartland gets great new employees.

Due to the volume of applicants and the projected program's start date, all applications must be postmarked by July 1.

Need more information about Stepping Stones? Call Workforce Development Coordinator Joan Summers at (816) 271-1277 or Human Resources Consultant Jean Rush at (816) 271-7502.



Clinical Laboratory Sciences

School of Allied Health
Academic Advisors

Address (Department and Faculty):

Clinical Laboratory Sciences

The University of Kansas Medical Center
3901 Rainbow Boulevard, Mail Stop: 4048
Kansas City, KS 66160

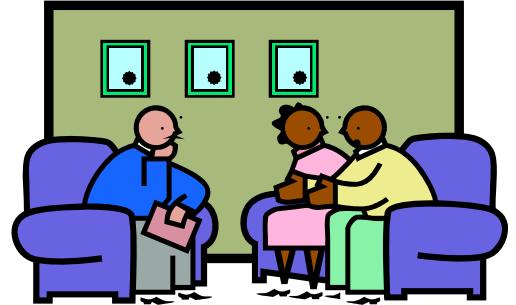
Telephone: (913) 588-5220

Fax: (913) 588-5222

Department Chair & Program Director:

Venus J. Ward, Ph.D., MT (ASCP), CLS (NCA)

E-mail Address: vward@kumc.edu



Advisors (Persons to Contact):

Jan Hudzicki, Ph.D., MT (ASCP)SM, CLS (NCA)

Admissions Committee Co-Chair

E-mail Address: jhudzicki@kumc.edu

(June through December)

Patricia Hargrave, Ph.D., MT (ASCP), CLS (NCA)

E-mail Address: phargrav@kumc.edu

(January through May)

KU School of Allied Health

Recruitment Coordinator & Advisor

E-mail Address: alliedhealth@kumc.edu

KU Lawrence Campus:

Appointments: (785) 864-2834

When: By appointment

Where: 132 Strong Hall
Lawrence, Kansas

The University of Kansas Medical Center (KUMC) Campus

Appointments: (913) 588-5220

When: Monday - Friday

Where: 3901 Rainbow Boulevard, G014 Eaton
Kansas City, Kansas

Kansas Relay Number: 800-766-3777